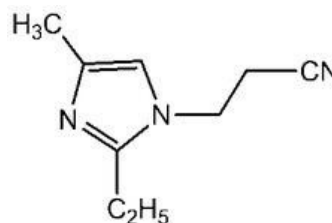


Resicure™ EMI-24CN

Description:

EMI-24CN is commonly used as a sole curing agent or as a dicy and anhydride cure accelerator in epoxy resin-based formulations. Typical loading level as a sole curing agent is about 4-6 phr and as a dicy and anhydride cure accelerator is about 0.5 – 1.5 phr. EMI-24CN provides good compatibility with liquid epoxy resins and 2-3 days of formulation shelf stability at ambient temperature.



1-(2-cyanoethyl)-2-ethyl-4-methylimidazole

Advantages:

- Rapid reactivity at temperature <120°C with 2-3 days latency
- High glass transition temperature
- Good chemical resistance

Typical Applications:

- One-component impact resistant adhesives for auto, aerospace and electronics applications
- Composites such as prepregs and filament winding
- Electrical potting and encapsulation
- Neutralizer for acid stabilizers in diazo copying compounds as well as in printing systems for acrylic fabrics with cationic dyes

Handling Precautions:

Refer to the product Safety Data Sheet

Typical Properties:

Appearance:	Brown Liquid
Viscosity:	200 cps
Gardner color:	<16
Moisture content:	<0.5%
Assay by GC:	85%
EMI-24 content:	4.0%
Methanol content:	2.0%
Free acrylonitrile (GC/MS):	<500 ppm

Recommended use level with
Epoxy resin (EEW=190): 4-6 PHR

Typical Performance:

Gel time @ 100°C:	15 minutes
Gel time @ 150°C:	1.5 minutes
Latency at 25°C:	3 days
HDT:	161°C

ACCI Specialty Materials

1600 W. Blancke St. Linden, NJ 07036 Tel: (816) 281-5632 Fax: (908) 474-9388 www.ac-catalysts.com

Neither ACCI Specialty Materials nor A&C Catalysts, Inc. (ACCI) is responsible for the use of the information, and no warranty is made of the merchantability or fitness of any product. Purchasers of any product must determine whether the product is acceptable for their particular purpose, under their own operation conditions. Nothing herein waves any of ACCI conditions of sale. Nothing herein shall imply the nonexistence of any relevant patents or to constitute permission, inducement, or recommendation to practice any invention covered by any patent, without authority from its owner. Typical Properties are not to be construed as specifications. Please contact ACCI for current specifications.